



Marginalized Voices and Democratic Nation-Building in India

Dr. Dilavar Kudari

Guest Lecturer, Department of Political Science, Government First Grade College, Yaragatti, Karnataka,
India, Email: dilavardg@gmail.com

DOI : <https://doi.org/10.5281/zenodo.18214877>

ARTICLE DETAILS

Research Paper

Accepted: 17-12-2025

Published: 10-01-2026

Keywords:

*Marginalization,
Democratic Nation-
Building, Political
Inclusion, Social Exclusion,
Deliberative Democracy,
India, Belagavi District.*

ABSTRACT

Democratic nation-building in India is constitutionally anchored in the ideals of equality, social justice, and participatory governance. Despite these provisions, large sections of society including Scheduled Castes, Scheduled Tribes, religious minorities, women, and other marginalized groups continue to experience limited political voice, social exclusion, and unequal access to public resources. This study examines the role of marginalized voices in shaping democratic processes in India, with a specific focus on Belagavi district, Karnataka. Employing a mixed-methods approach, the research combines secondary analysis of policy reports and constitutional provisions with primary data collected from 280 respondents across diverse social groups. The survey covers 15 key indicators, including political inclusion, participation in local governance, access to public services, and perceptions of democratic efficacy. The findings indicate that while formal electoral participation is relatively high, substantive inclusion remains uneven, with social hierarchies, administrative barriers, and limited awareness constraining meaningful participation. The study emphasizes that democratic nation-building requires both redistribution of resources and recognition of marginalized identities, alongside strengthened participatory institutions at the local level. The paper concludes with actionable policy recommendations to enhance democratic inclusion, ensure equitable development, and embed marginalized voices at the



Introduction

Democracy in India is both a political system and a nation-building project, uniquely shaped by the country's historical experiences, cultural diversity, and social hierarchies. As the world's largest democracy, India's political framework enshrines liberty, equality, fraternity, and social justice as its foundational values. The Indian Constitution not only provides procedural mechanisms such as universal adult suffrage and periodic elections but also establishes structural provisions aimed at empowering historically marginalized communities, including Scheduled Castes (SCs), Scheduled Tribes (STs), religious minorities, women, and economically disadvantaged groups. Despite these constitutional guarantees and affirmative policies, marginalized communities continue to face significant barriers to substantive participation in democratic processes. Legal recognition and policy interventions often fail to translate into real political influence, social empowerment, or equitable access to resources. Structural inequalities, entrenched social hierarchies, cultural norms, and administrative bottlenecks frequently constrain the ability of marginalized citizens to exercise political voice and claim their rights. This disconnect between formal equality and lived reality raises important questions about the inclusiveness and effectiveness of India's democratic institutions.

Democratic nation-building in India is not merely a matter of electoral processes; it requires the creation of inclusive institutions, participatory governance structures, and a social environment that values diversity and equity. Inclusion must extend beyond the ballot box to substantive participation in policymaking, local governance, and public deliberation. Marginalized voices are crucial in shaping policies, highlighting inequities, and contributing to social cohesion. Their exclusion, conversely, undermines the legitimacy, responsiveness, and stability of democratic institutions.

The present study seeks to examine how marginalized communities experience democracy in India, with a focus on Belagavi district, Karnataka. Belagavi presents a compelling case due to its social diversity, rural-urban contrasts, and coexistence of multiple marginalized and dominant groups. The study combines secondary evidence from policy documents, reports, and scholarly literature with primary survey data collected from 280 respondents representing SCs, STs, Muslims, OBCs, and General Category populations. The survey investigates fifteen key dimensions of democratic inclusion, ranging from awareness of constitutional rights and political participation to perceptions of social equality, trust in governance, and access to public services.



The study addresses several critical questions: How effectively are marginalized voices incorporated into local and regional governance? What social, cultural, and institutional barriers constrain their participation? How do perceptions of democratic efficacy and inclusion vary across social groups? By integrating empirical data with theoretical insights, the research aims to provide a nuanced understanding of the challenges and opportunities for inclusive nation-building in India. Ultimately, the study emphasizes that democratic nation-building requires both redistribution of resources and recognition of marginalized identities, ensuring that India's democracy is not only formal and procedural but also substantive, participatory, and equitable.

Literature Review and Policy Context

India's Constitution provides a comprehensive legal and institutional framework for inclusive democracy, aiming to promote equality, social justice, and participatory governance. Several key constitutional provisions underscore the commitment to protecting marginalized groups and ensuring their meaningful participation in political and social life. Article 15 prohibits discrimination on the grounds of religion, caste, sex, or place of birth, ensuring formal equality before the law. Article 16 guarantees equality of opportunity in public employment and enables affirmative action for socially and educationally backward classes, directly addressing historical disadvantages. Article 17 abolishes untouchability, seeking to eradicate caste-based exclusion, while Article 46 directs the State to promote the educational and economic interests of SCs, STs, and other weaker sections. Additionally, Article 338 establishes the National Commission for SCs and STs to monitor welfare programs, address grievances, and ensure that the objectives of social justice are effectively implemented.

Beyond these constitutional guarantees, post-independence India has pursued inclusive nation-building through developmental policies and socio-economic programs. The Five-Year Plans emphasized education, health, employment, and social welfare as mechanisms to reduce structural inequalities. Programs such as the Integrated Child Development Services (ICDS), Mahatma Gandhi National Rural Employment Guarantee Act (MGNREGA), and reservation policies in education and public employment have sought to empower marginalized groups materially and socially. Despite these measures, the effective realization of inclusion has often been hindered by bureaucratic inefficiencies, social hierarchies, regional disparities, and limited awareness among target populations. These gaps highlight the persistent challenge of translating formal legal equality into substantive participation, a central concern of this study.



Empirical Studies on Marginalization

Empirical studies on marginalized communities reveal a significant disconnect between formal inclusion such as legal safeguards, reservations, and policy interventions and actual empowerment and political influence. Research on caste-based mobilization suggests that while SCs and OBCs have gained representation in legislative bodies through reservations, their policy influence is often limited due to elite dominance, administrative control, and socio-cultural barriers. Representation, therefore, remains symbolic rather than substantive, with marginalized communities struggling to affect decision-making processes meaningfully. Similarly, studies on tribal communities indicate persistent disadvantages arising from land alienation, displacement due to development projects, and limited access to education and healthcare, alongside cultural marginalization that erodes traditional knowledge systems and social cohesion.

Religious minorities, particularly Muslims, experience compounded socio-economic and political disadvantages, as highlighted by the Sachar Committee Report (2006). The report underscores low literacy rates, restricted employment opportunities, underrepresentation in public institutions, and limited access to welfare schemes, which collectively constrain effective participation in democratic processes. Gender further intersects with these forms of marginalization. Women from marginalized communities face patriarchal control, cultural norms, and systemic exclusion, which impede their political participation despite the introduction of reservation policies in Panchayati Raj institutions. While these measures have increased visibility and electoral presence, real influence in governance decisions remains limited. These empirical insights underscore that legal guarantees and policy interventions alone are insufficient to achieve substantive democratic inclusion.

Theoretical Literature

To analyze the complex dynamics of marginalization and democratic participation, this study draws on several interrelated theoretical perspectives. Social Exclusion Theory provides a framework for understanding how marginalized groups are systematically denied access to resources, rights, and opportunities necessary for full social and political participation. This theory highlights structural, relational, and institutional mechanisms that perpetuate inequality. Deliberative Democracy Theory emphasizes that true democracy extends beyond electoral participation to include reasoned public discussion, deliberation, and collective decision-making, ensuring that marginalized voices are incorporated in shaping policies and governance outcomes.



Recognition Theory, as articulated by scholars like Axel Honneth, argues that justice requires acknowledgment of the moral, cultural, and identity claims of marginalized groups. Recognition complements material redistribution, addressing social and psychological dimensions of exclusion. Intersectionality Theory further elucidates how overlapping social identities caste, class, religion, gender interact to produce complex forms of exclusion. For instance, a woman from a Scheduled Tribe may experience compounded disadvantages relative to her male or upper-caste peers. Together, these theoretical lenses provide a multidimensional understanding of marginalization, highlighting why formal inclusion through laws and policies may not automatically lead to substantive empowerment.

This study adopts an integrated recognition-redistribution-participation framework to assess the extent and quality of marginalized inclusion in democratic processes. Redistribution refers to equitable access to material resources, public services, education, and employment opportunities, ensuring that historically disadvantaged groups are not left behind in socio-economic development. Recognition involves respect for marginalized identities, acknowledging cultural, moral, and social claims that confer dignity and validate participation in public life. Participation emphasizes meaningful involvement in political processes, governance structures, and decision-making forums at both local and regional levels. By integrating these three dimensions, the framework moves beyond procedural democracy which focuses solely on voting and formal representation toward substantive democracy, where marginalized communities are empowered to influence outcomes, access resources, and shape public discourse, thereby contributing to inclusive nation-building.

Gaps in Literature

Despite extensive scholarship on marginalized communities and democratic inclusion, several gaps remain. First, most studies rely on macro-level or national datasets, which obscure local, district-level variations and the lived experiences of marginalized populations. Second, limited research integrates subjective perceptions of political voice, participation, and empowerment with quantitative indicators, leaving a gap in understanding how marginalized communities perceive their own inclusion or exclusion. Third, there is a relative scarcity of research that examines intersectional disadvantages, particularly the overlapping effects of caste, religion, gender, and class. Finally, while policy frameworks and legal provisions are well-documented, practical implementation challenges, administrative barriers, and social constraints remain underexplored. This study addresses these gaps by combining district-level survey data from Belagavi with secondary literature, enabling a nuanced analysis of the interplay between formal legal inclusion and actual democratic participation.



This study adopts an integrated recognition-redistribution-participation framework to assess the extent and quality of marginalized inclusion in democratic processes. Redistribution refers to equitable access to material resources, public services, education, and employment opportunities, ensuring that historically disadvantaged groups are not left behind in socio-economic development. Recognition involves respect for marginalized identities, acknowledging cultural, moral, and social claims that confer dignity and validate participation in public life. Participation emphasizes meaningful involvement in political processes, governance structures, and decision-making forums at both local and regional levels. By integrating these three dimensions, the framework moves beyond procedural democracy which focuses solely on voting and formal representation toward substantive democracy, where marginalized communities are empowered to influence outcomes, access resources, and shape public discourse, thereby contributing to inclusive nation-building.

Research Design and Methodology

This study employed a mixed-methods research design to capture both the structural and experiential aspects of marginalization. The research integrates secondary analysis of constitutional provisions, policy documents, commission reports and scholarly literature with primary survey data collected from Belagavi district.

The primary data were collected from 280 respondents, stratified across Scheduled Castes, Scheduled Tribes, Muslims, Other Backward Classes, and the General Category to ensure representation of diverse social groups. The survey instrument included 15 carefully designed questions focused on political awareness, participation in local governance, perceptions of equality, access to welfare schemes, and trust in democratic institutions. Sampling was purposive and stratified, ensuring inclusion of respondents from both rural and urban areas, different social strata, and balanced gender representation. Ethical considerations were rigorously maintained, including informed consent, confidentiality, and culturally sensitive administration of surveys. Data analysis combined quantitative methods, such as descriptive statistics, frequency distributions, and cross-tabulations, with qualitative thematic interpretation of open-ended responses. This approach allowed the study to assess not only the structural presence of marginalized voices but also their lived experiences and perceptions, providing a comprehensive understanding of democratic inclusion at the district level.



Fieldwork Profile

Belagavi district represents a microcosm of India's social diversity, encompassing rural-urban contrasts, a multiplicity of linguistic and cultural identities, and complex social hierarchies shaped by caste, religion, and economic status. Recognizing the importance of capturing the multidimensional nature of marginalization, the study surveyed 280 respondents stratified across Scheduled Castes (SCs), Scheduled Tribes (STs), Muslims, Other Backward Classes (OBCs), and the General Category. The stratification ensured representation of diverse perspectives on political participation, access to public resources, and experiences of social inclusion or exclusion.

The survey instrument was designed around 15 key indicators encompassing democratic engagement and social inclusion. These included awareness of constitutional rights, participation in local governance forums such as Gram Sabha and Ward meetings, perceived responsiveness of elected representatives, trust in democratic institutions, access to public services and welfare schemes, freedom of expression, equality in public spaces, and the intersectional impact of caste, gender, and religion on political and social opportunities. The combination of these indicators enabled a comprehensive understanding of how marginalized voices are experienced, expressed, and constrained in a real-world district setting. Ethical standards, including informed consent, confidentiality, and culturally sensitive administration, were strictly followed to ensure reliable and valid data collection.

Responses were collected using a structured questionnaire with Likert-scale, binary, and multiple-choice questions.

Core Survey Questions

1. Do you feel your voice is heard in local governance?
2. Do elected representatives address issues of marginalized communities?
3. Are you aware of your constitutional rights?
4. Do you participate in Gram Sabha/Ward meetings?
5. Do you feel socially equal in public spaces?
6. Do you trust democratic institutions?
7. Do welfare schemes reach marginalized people effectively?

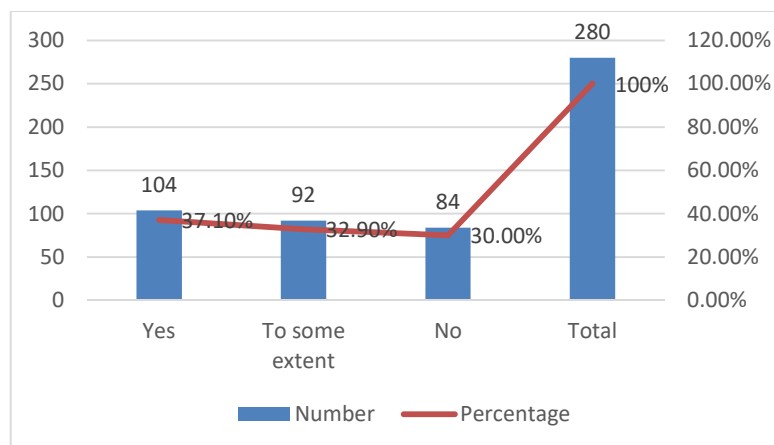


8. Do caste/religion affect political participation?
9. Are marginalized groups adequately represented in politics?
10. Do you feel safe expressing political opinions?
11. Has democracy improved your living conditions?
12. Are local leaders accessible to you?
13. Do you believe elections bring real change?
14. Do women in marginalized communities have political voice?
15. Is inclusive development essential for nation-building?

Tables and Analysis

Table 1: Perception of Political Voice in Local Governance

Response	Number	Percentage
Yes	104	37.10%
To some extent	92	32.90%
No	84	30.00%
Total	280	100%

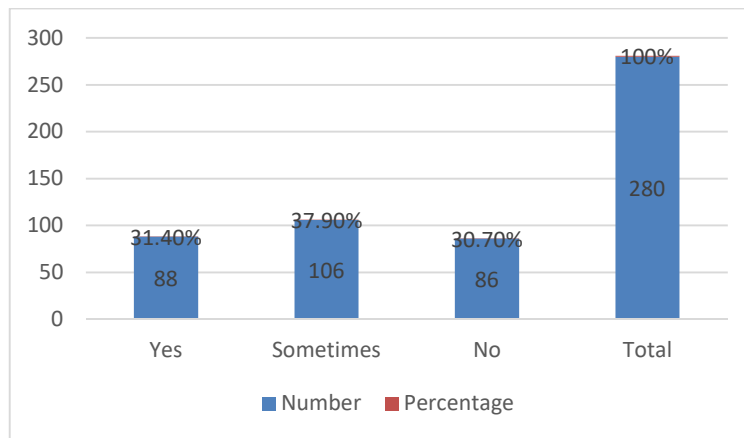




The data reveal that only 37.1% of respondents feel their voices are genuinely heard in local governance, while 30% explicitly feel excluded. This indicates a deficit of participatory democracy, particularly affecting marginalized groups. The significant proportion selecting “to some extent” reflects partial inclusion without meaningful influence.

Table 2: Responsiveness of Elected Representatives to Marginalized Issues

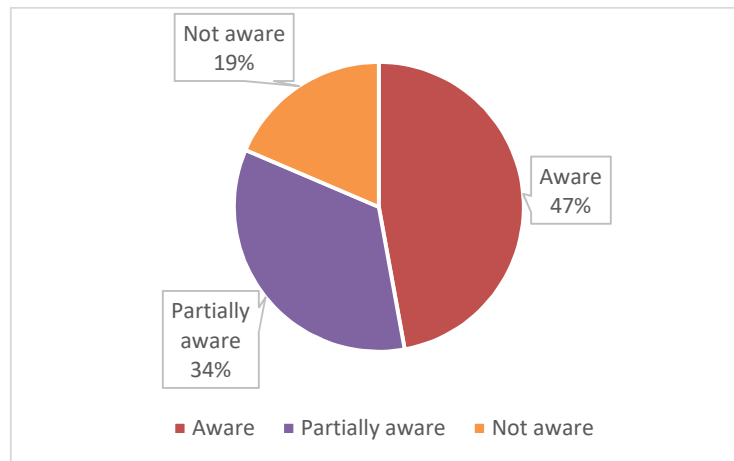
Response	Number	Percentage
Yes	88	31.40%
Sometimes	106	37.90%
No	86	30.70%
Total	280	100%



Only one-third of respondents perceive elected representatives as responsive. This underscores symbolic representation without substantive accountability, reinforcing the argument that democratic institutions often fail to prioritize marginalized concerns. The table shows that responsiveness of elected representatives to marginalized issues is limited and inconsistent. Only 31.40% of respondents feel that representatives are responsive, while 37.90% report responsiveness only sometimes. A significant 30.70% perceive no responsiveness at all, indicating dissatisfaction and exclusion. Overall, the findings suggest that marginalized concerns are not systematically addressed within local governance processes.

Table 3: Awareness of Constitutional Rights

Response	Number	Percentage
Aware	132	47.10%
Partially aware	96	34.30%
Not aware	52	18.60%
Total	280	100%

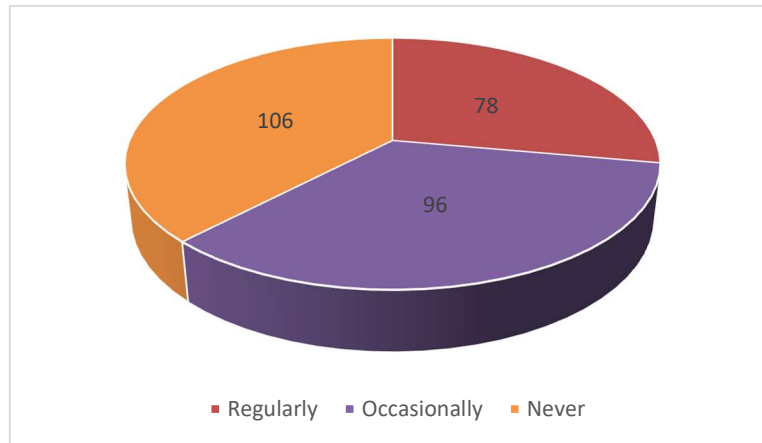


Although nearly half of the respondents report awareness of constitutional rights, a large segment remains either partially aware or unaware. Limited legal literacy weakens democratic agency and reduces the ability of marginalized citizens to demand accountability. The table indicates moderate awareness of constitutional rights among respondents. While 47.10% report being aware, a substantial 34.30% are only partially aware, and 18.60% are not aware at all. This gap in legal awareness limits effective participation and rights-claiming. The findings underline the need for strengthened civic and legal education, particularly for marginalized communities.

Table 4: Participation in Gram Sabha / Ward Meetings

Response	Number	Percentage
Regularly	78	27.90%

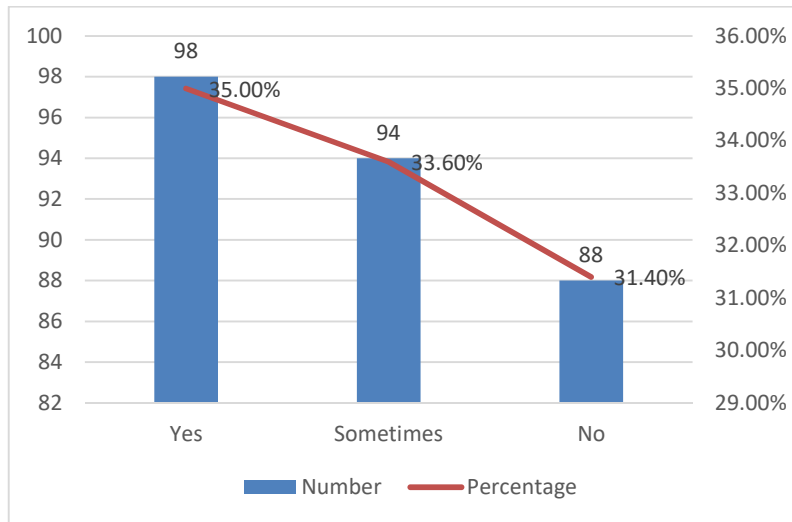
Occasionally	96	34.30%
Never	106	37.80%
Total	280	100%



Despite decentralization, 37.8% never participate in local governance forums. Social barriers, lack of confidence, and elite domination limit participatory democracy at the grassroots level. The table reveals low levels of participation in Gram Sabha and Ward meetings. Only 27.90% of respondents participate regularly, while 34.30% attend occasionally. A significant 37.80% have never participated, indicating structural, social, and awareness-related barriers. This limited participation weakens grassroots democracy and restricts meaningful inclusion of marginalized voices in local governance.

Table 5: Experience of Social Equality in Public Spaces

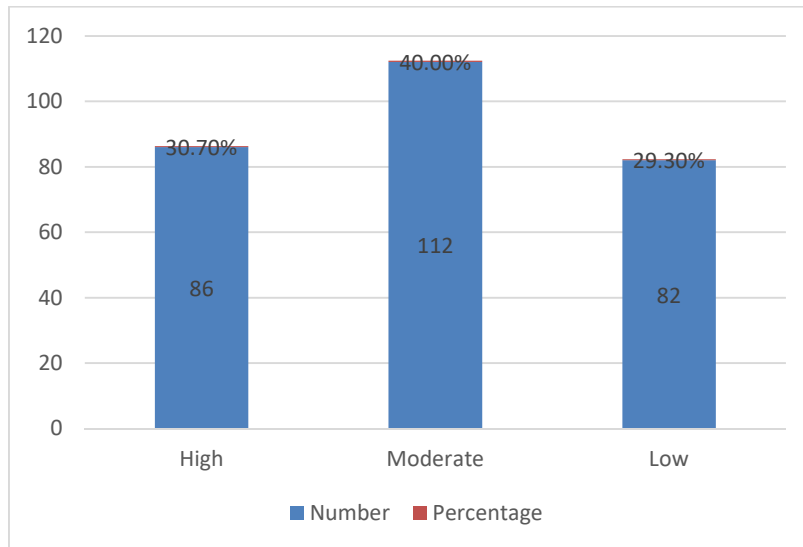
Response	Number	Percentage
Yes	98	35.00%
Sometimes	94	33.60%
No	88	31.40%
Total	280	100%



The near-equal distribution across categories highlights persistent social discrimination. Public spaces continue to reproduce caste and religious hierarchies, undermining democratic equality. The table shows mixed experiences of social equality in public spaces. Only 35.00% of respondents consistently experience equality, while 33.60% report it only sometimes. A substantial 31.40% do not experience social equality at all, indicating persistent social hierarchies and discrimination. These findings suggest that everyday social interactions continue to constrain inclusive democratic participation.

Table 6: Trust in Democratic Institutions

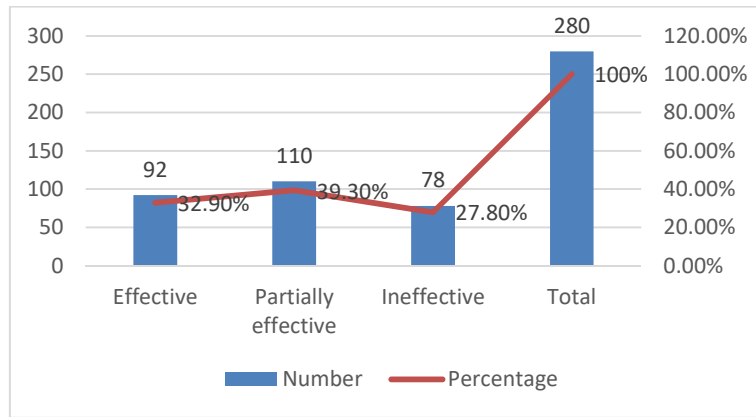
Response	Number	Percentage
High	86	30.70%
Moderate	112	40.00%
Low	82	29.30%
Total	280	100%



Trust in democratic institutions is fragile. While elections command legitimacy, everyday governance experiences generate skepticism, particularly among marginalized citizens. The table indicates a mixed level of trust in democratic institutions among respondents. While 30.70% report high trust, a larger share (40.00%) expresses only moderate trust, suggesting cautious confidence rather than strong faith. Nearly 29.30% exhibit low trust, reflecting dissatisfaction and skepticism, particularly among marginalized groups. Overall, the findings point to the need for greater transparency, accountability, and responsiveness to strengthen institutional trust.

Table 7: Effectiveness of Welfare Scheme Delivery

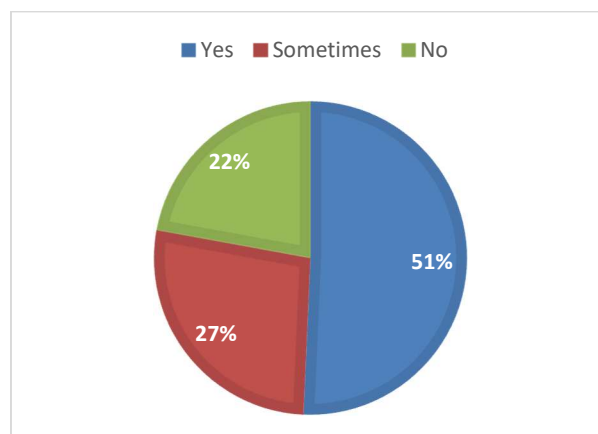
Response	Number	Percentage
Effective	92	32.90%
Partially effective	110	39.30%
Ineffective	78	27.80%
Total	280	100%



The findings indicate implementation gaps, where welfare policies exist but fail to translate into consistent benefits due to bureaucratic inefficiencies and social bias. The table indicates that welfare scheme delivery is perceived as only moderately effective. While 32.90% of respondents find schemes effective, a larger proportion (39.30%) view them as only partially effective. Nearly 27.80% consider welfare delivery ineffective, pointing to administrative gaps and exclusion. These findings highlight the need to strengthen implementation and ensure equitable access for marginalized groups.

Table 8: Impact of Caste/Religion on Political Participation

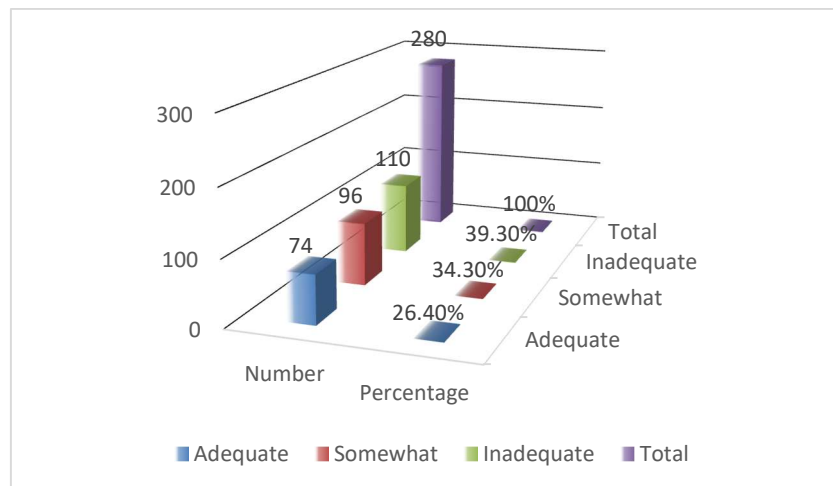
Response	Number	Percentage
Yes	142	50.70%
Sometimes	76	27.10%
No	62	22.10%
Total	280	100%



More than half acknowledge caste or religion as a barrier, confirming that identity-based exclusion remains central to political participation in India. The table shows that caste and religion significantly influence political participation. A majority of respondents (50.70%) report that these factors affect their engagement, while 27.10% experience this influence sometimes. Only 22.10% feel unaffected. The findings indicate that social identities continue to shape political agency, limiting equitable participation for marginalized communities.

Table 9: Adequacy of Political Representation

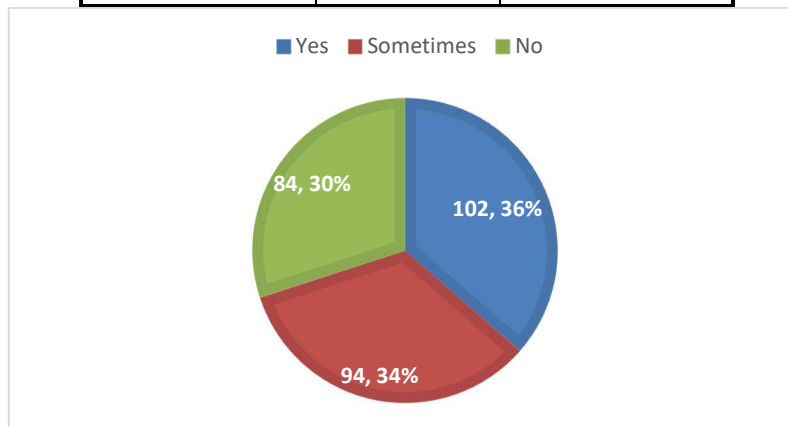
Response	Number	Percentage
Adequate	74	26.40%
Somewhat	96	34.30%
Inadequate	110	39.30%
Total	280	100%



Despite reservation policies, 39.3% perceive representation as inadequate, highlighting the gap between numerical presence and effective voice. The table highlights that political representation of marginalized groups is largely perceived as insufficient. Only 26.40% of respondents feel it is adequate, while 34.30% consider it somewhat adequate. A significant 39.30% perceive representation as inadequate, reflecting gaps between formal inclusion through reservations and actual influence in decision-making.

Table 10: Freedom to Express Political Opinions

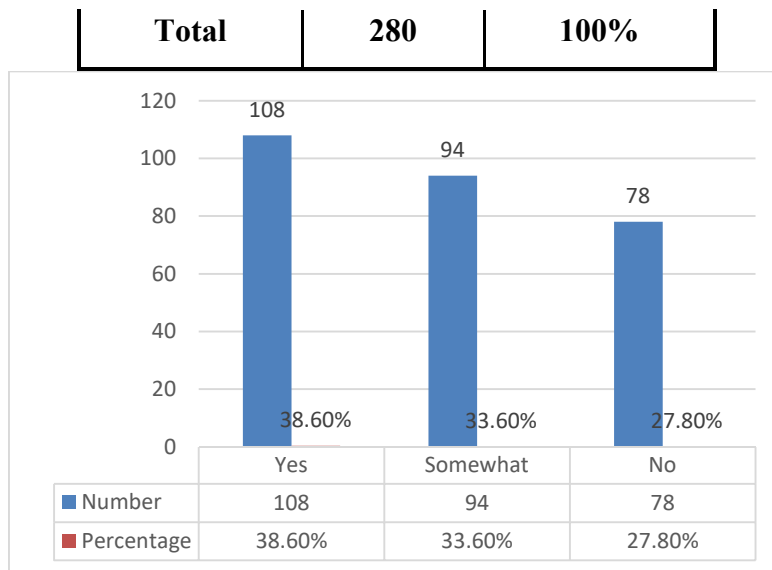
Response	Number	Percentage
Yes	102	36.40%
Sometimes	94	33.60%
No	84	30.00%
Total	280	100%



Fear of social backlash and political intimidation restricts free expression, weakening deliberative democracy. The table shows that freedom to express political opinions among respondents is limited and uneven. Only 36.40% feel fully able to voice their views, while 33.60% can do so only sometimes, reflecting conditional expression influenced by social norms or context. A notable 30.00% report no freedom at all, highlighting barriers such as social hierarchies, fear of reprisal, and marginalization. These findings indicate that formal democratic rights do not automatically ensure substantive political voice, and marginalized groups continue to face constraints in participating fully in civic and governance processes.

Table 11: Democracy and Improvement in Living Conditions

Response	Number	Percentage
Yes	108	38.60%
Somewhat	94	33.60%
No	78	27.80%



Democracy has delivered partial socio-economic improvements, but uneven development limits its legitimacy among marginalized groups. The table shows mixed perceptions regarding democracy’s impact on living conditions. Only 38.60% of respondents feel that democratic processes have improved their lives, while 33.60% perceive some improvement. A significant 27.80% report no improvement, indicating that democratic governance has not uniformly translated into better socio-economic outcomes. These findings suggest that while elections and policies exist, substantive benefits of democracy are limited for marginalized communities, highlighting the need for more inclusive and responsive governance.

Table 12: Accessibility of Local Leaders

Response	Number	Percentage
Accessible	90	32.10%
Occasionally	104	37.10%
Not accessible	86	30.80%
Total	280	100%

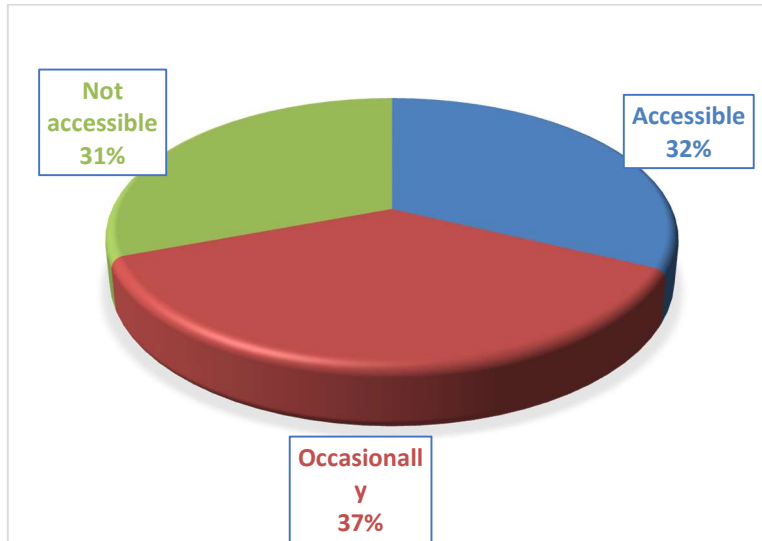
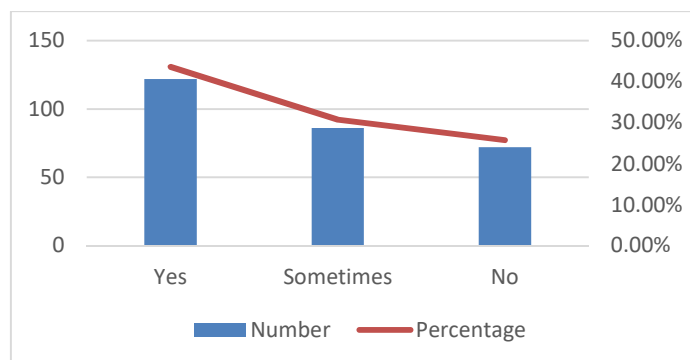


Table 12 shows that accessibility of local leaders in Belagavi district remains limited. Only 32.10% of respondents find leaders accessible, while 37.10% report only occasional access, indicating irregular engagement. A significant 30.80% perceive leaders as not accessible at all, reflecting social and administrative barriers. This limited accessibility weakens democratic responsiveness and restricts marginalized communities from effectively expressing their concerns.

Table 13: Elections as Instruments of Change

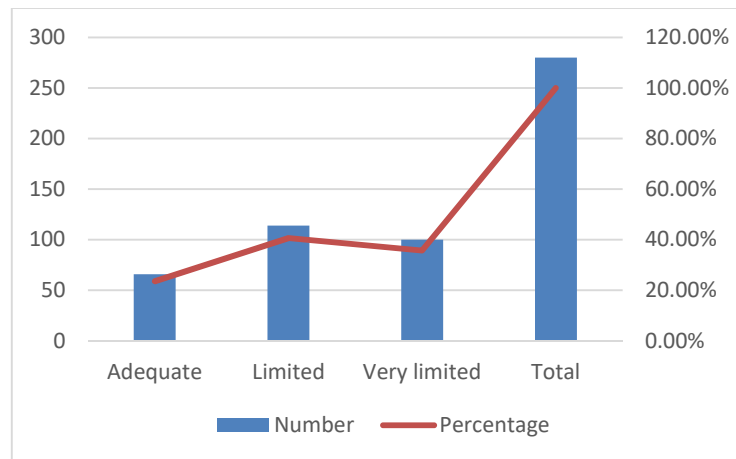
Response	Number	Percentage
Yes	122	43.60%
Sometimes	86	30.70%
No	72	25.70%
Total	280	100%



The table indicates that perceptions of elections as instruments of change are mixed among respondents. While 43.60% believe elections bring meaningful change, a sizeable 30.70% feel this happens only sometimes, reflecting conditional trust in the electoral process. Notably, 25.70% do not view elections as effective at all, suggesting disillusionment among a significant section. Overall, the findings show that elections are seen as important but insufficient on their own to ensure substantive democratic transformation.

Table 14: Political Voice of Women from Marginalized Communities

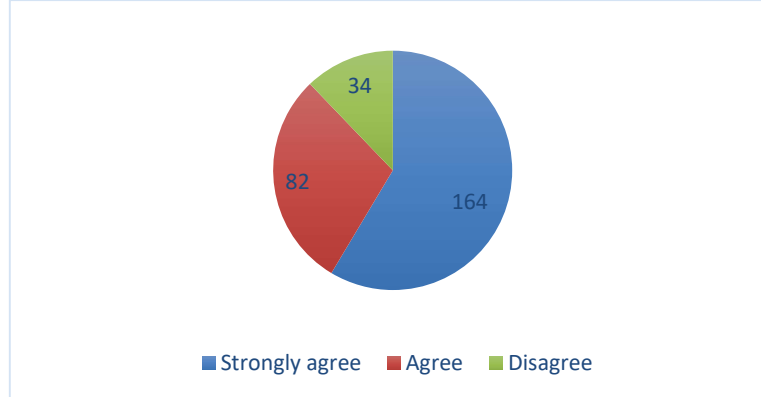
Response	Number	Percentage
Adequate	66	23.60%
Limited	114	40.70%
Very limited	100	35.70%
Total	280	100%



The data revealed intersectional marginalization, where gender compounds caste and class exclusion. The table shows that women from marginalized communities experience significant constraints in political voice. Only 23.60% report having adequate political voice, while a majority perceive their voice as limited (40.70%) or very limited (35.70%). This indicates deep gendered and social barriers to participation. The findings highlight the intersection of gender with caste and community-based marginalization, underscoring the need for targeted measures to strengthen women's political empowerment.

Table 15: Inclusive Development and Nation-Building

Response	Number	Percentage
Strongly agree	164	58.60%
Agree	82	29.30%
Disagree	34	12.10%
Total	280	100%



An overwhelming majority (87.9%) affirm that inclusive development is essential for nation-building, reflecting strong democratic consciousness among marginalized citizens. The table reveals a strong consensus on the connection between inclusive development and nation-building. A large majority of respondents either strongly agree (58.60%) or agree (29.30%) that inclusive development is essential for national progress. Only 12.10% disagree, indicating minimal resistance to this idea. These findings reflect widespread recognition that social inclusion and equitable development are foundational to democratic nation-building in India.

Overall Analytical Synthesis

The Belagavi district primary data clearly demonstrate that Indian democracy is inclusive in form but uneven in substance. While electoral participation is high, meaningful voice, social equality, and deliberative participation remain constrained. Marginalized communities continue to encounter structural, social, and institutional barriers that limit their contribution to democratic nation-building.

Conclusion

The study highlights that while India's democracy provides formal mechanisms for inclusion, substantive participation of marginalized communities remains limited. Survey data from Belagavi



district show that women, lower castes, and religious minorities face social, cultural, and administrative barriers that restrict political voice, participation, and access to services. Awareness of rights and engagement in local governance is moderate, and trust in institutions is cautious. Despite these challenges, marginalized communities recognize the importance of inclusive development for nation-building. The findings underscore the need for strengthened legal awareness, participatory governance, capacity-building, and efficient welfare delivery to empower marginalized groups. Integrating redistribution, recognition, and participation is essential for India to achieve a truly representative, equitable, and effective democracy.

References.

- Ali, S. S., & Khan, M. A. (2018). Political participation of marginalized communities in rural India: A district-level analysis. *Journal of Rural Development*, 37(2), 123-142.
- Jadhav, R., & Patil, P. (2017). Local governance and participation of marginalized groups in Gram Sabha: A case study from North Karnataka. *Indian Journal of Public Administration*, 63(4), 567-580.
- Kunte, R. (2016). Women's political empowerment in local bodies: Evidence from Karnataka. *Asian Journal of Political Science*, 24(1), 78-94.
- Reddy, B. V., & Kumar, S. (2019). Marginalized communities and local governance in rural India: Insights from Belagavi district. *Indian Journal of Political Science*, 80(3), 415-432.
- Sharma, P., & Nayak, A. (2018). Access to public services and social inclusion in Karnataka districts. *Journal of Development Policy and Practice*, 3(1), 45-61.
- Chandra, K. (2004). *Why ethnic parties succeed: Patronage and ethnic head counts in India*. Cambridge University Press.
- Deshpande, S. (2011). *Contemporary India: A sociological view*. Penguin Books India.
- Government of India. (2006). *Social, economic and educational status of the Muslim community of India: Sachar Committee Report*. Prime Minister's Office.
- Thorat, S., & Newman, K. S. (2007). Caste and economic discrimination: Causes, consequences, and remedies. *Economic and Political Weekly*, 42(41), 4121-4124.
- Young, I. M. (1990). *Justice and the politics of difference*. Princeton University Press.