



Forensic Urban Design and Its Role in Crime Prevention

Priyanka Singh^{1*}, Ankita Sharma², Aanchal Sharma³

¹Assistant Professor (Applied Art) Swami Vivekananda Subharti University, Meerut, U.P, India- 210005

² Lecturure (Forensic Science) Swami Vivekananda Subharti University, Meerut, U.P, India-210005

³ Assistant Professor (Civil Engineering)Swami Vivekananda Subharti University, Meerut, U.P, India
210005

DOI : <https://doi.org/10.5281/zenodo.20144923>

ARTICLE DETAILS

Research Paper

Accepted: 28-04-2026

Published: 10-05-2026

Keywords:

Forensic Urban Design, Crime Prevention, Urban Planning, Environmental Design, Visibility and Surveillance, Safe Urban Environment, Spatial Organization, Urban Structure.

ABSTRACT

Urban environments play a crucial role in shaping human behavior, including the occurrence and distribution of crime. Conventional approaches to crime prevention have largely been reactive, relying on law enforcement and judicial systems after incidents occur. In contrast, contemporary design-oriented strategies emphasize proactive measures embedded within the urban fabric itself. Forensic urban design emerges as a framework that integrates spatial planning, environmental structuring, and analytical assessment of crime patterns to reduce opportunities for criminal activity. This study examines how the built environment can be strategically designed to enhance safety, improve visibility, and support effective surveillance. It focuses on the relationship between spatial organization, user perception, and crime deterrence, highlighting how thoughtful design interventions can influence behavior and reduce vulnerability. Through design strategies, analytical insights, and infrastructure-based considerations, the research demonstrates that urban spaces can be shaped to promote both functionality and security. The findings suggest that a well-designed urban environment not only improves usability and aesthetic quality but also serves as an active mechanism for crime prevention, contributing to safer and more resilient cities.



Introduction

Urban environments are complex, dynamic systems that significantly influence human behavior, social interactions, and patterns of movement. As cities continue to expand due to rapid urbanization and population growth, they also face increasing challenges related to safety and security. Among these challenges, crime remains one of the most critical concerns affecting the quality of urban life. The relationship between the built environment and criminal activity has been widely acknowledged, suggesting that the design and organization of urban spaces can either discourage or facilitate unlawful behavior.

Traditionally, crime prevention strategies have relied heavily on reactive approaches such as policing, surveillance after incidents, and legal enforcement. While these methods play an essential role in maintaining order, they often address the consequences of crime rather than its underlying causes. This limitation has led to a growing interest in proactive and preventive strategies that are embedded within the physical and spatial structure of cities. In this context, the concept of forensic urban design has emerged as a forward-thinking approach that focuses on reducing opportunities for crime through intentional design and planning.

Forensic urban design is grounded in the understanding that spatial configurations, environmental conditions, and patterns of use can influence both the occurrence of crime and the perception of safety. Urban spaces that are poorly lit, visually obstructed, or inadequately maintained often create environments where criminal activities can occur with minimal risk of detection. Conversely, spaces that are open, well-organized, and clearly defined tend to promote natural surveillance and a sense of ownership among users, thereby reducing the likelihood of criminal behavior.

A key aspect of this approach is the emphasis on visibility and surveillance. Visibility is not limited to technological monitoring systems but also includes the natural ability of individuals within a space to observe and be observed. When public areas are designed to enhance sightlines, eliminate hidden corners, and encourage active use, they inherently become safer. Similarly, effective spatial organization ensures that movement patterns are predictable and accessible, reducing confusion and vulnerability among users. Clear pathways, defined zones, and intuitive layouts contribute to a sense of order and control within the environment.

Another important factor is the role of environmental cues in shaping human perception and behavior. Elements such as signage, lighting, color, and spatial hierarchy communicate information about how a



space should be used and who it belongs to. These cues can reinforce social norms, discourage inappropriate activities, and create a psychological sense of safety. For example, well-maintained environments signal active management and oversight, which can deter potential offenders. In contrast, neglected or abandoned spaces often convey a lack of control, making them more susceptible to crime.

The integration of analytical insights into urban design further strengthens the effectiveness of preventive strategies. By examining patterns of criminal activity, including location, frequency, and type, it becomes possible to identify high-risk areas and implement targeted interventions. This data-driven approach ensures that design decisions are not only aesthetically and functionally appropriate but also responsive to real-world challenges. The incorporation of such insights allows for the optimization of surveillance systems, the strategic placement of lighting, and the redesign of problematic spaces.

Infrastructure also plays a crucial role in supporting safe urban environments. The quality and condition of physical structures, including roads, pedestrian pathways, public spaces, and buildings, directly impact accessibility and usability. Well-designed infrastructure promotes continuous activity, reduces isolated zones, and encourages community engagement. Additionally, advancements in smart technologies have introduced new possibilities for enhancing urban safety, such as automated lighting systems, real-time monitoring, and integrated emergency response mechanisms.

Despite the potential benefits of forensic urban design, several challenges remain. These include limitations in resources, lack of awareness, and the complexity of modifying existing urban structures. Furthermore, achieving a balance between security and openness is essential to ensure that cities remain inclusive and accessible while being safe. Overemphasis on surveillance and control can lead to environments that feel restrictive rather than welcoming.

In light of these considerations, this study aims to explore how urban environments can be designed to proactively prevent crime while maintaining functionality and aesthetic quality. By examining the interplay between spatial organization, visibility, environmental communication, and infrastructure, the research highlights the importance of a holistic approach to urban safety. The findings contribute to the growing body of knowledge on design-based crime prevention and emphasize the need for thoughtful planning in the development of future cities.

Literature Review

The relationship between urban design and crime prevention has been widely explored across multiple theoretical and empirical studies. Early research established that the physical environment plays a



significant role in influencing criminal behavior, laying the foundation for contemporary approaches that integrate design strategies into crime prevention frameworks.

One of the most influential contributions in this field is *Defensible Space* by Oscar Newman (1972) (Hesam Kamalipour, Mohsen Faizi, Gholamhossein Memarian, 2014), which introduced the concept that residential environments can be designed to promote territoriality and natural surveillance. Newman argued that clearly defined spaces, combined with increased visibility and a sense of ownership among residents, can significantly reduce crime rates. His work emphasized the importance of spatial organization and user control in creating safer environments.

Similarly, *Crime Prevention through Environmental Design* by C. Ray Jeffery (1971) (Jeffery, 1971) established the theoretical framework for Crime Prevention through Environmental Design (CPTED). This approach focuses on modifying the built environment to reduce opportunities for crime. Key principles of CPTED include natural surveillance, access control, territorial reinforcement, and maintenance. These principles highlight how design interventions can influence offender decision-making by increasing perceived risks and reducing potential rewards.

Further expanding on these ideas, recent urban studies emphasize the role of active public spaces and continuous human presence in enhancing safety. For instance, Carmona (2019) (Abdullah Addas, Ghassan Alserayhi, 2020) highlights that well-used streets and mixed land-use environments contribute to natural surveillance and discourage criminal behavior by increasing informal social control. Such environments foster a sense of community ownership and visibility, which are critical in crime deterrence.

The theoretical foundation has been further strengthened by contemporary developments in situational crime prevention. Clarke and Eck (2016) (Ronald Clarke, John Eck, 2003) explain that crime can be reduced by systematically modifying environmental conditions to increase effort and risk while reducing rewards and opportunities. Their updated framework reinforces the importance of design interventions in influencing offender decision-making within urban spaces.

In addition to theoretical frameworks, empirical studies have demonstrated the effectiveness of environmental design in reducing crime. Paul Cozens (2008) (Cozens, 2008) examined the application of CPTED principles in various urban contexts and found that well-designed environments with improved lighting, clear sightlines, and defined boundaries significantly reduce crime incidents. His research highlighted the importance of integrating design strategies with local context and community needs.



Technological advancements have also transformed urban safety strategies. The integration of Geographic Information Systems (GIS) and spatial analytics has enabled more precise identification of crime hotspots. According to Andresen and Malleon (2016) (Nick Malleon, Martin A Andresen, 2016), spatial crime analysis provides critical insights into crime patterns, allowing planners to implement targeted and evidence-based interventions. This data-driven approach ensures that urban design responds effectively to real-world conditions.

Moreover, the role of environmental perception in influencing safety has been widely explored in recent research. Studies by Lorenc et al. (2020) (Interventions to support people exposed to adverse childhood experiences: systematic review of systematic reviews, 2020) indicate that perceptions of safety are strongly linked to lighting quality, maintenance, and visual openness of spaces. Well-maintained environments signal control and discourage antisocial behavior, whereas neglected areas increase fear and vulnerability.

Recent studies have also emphasized the role of smart infrastructure and technology in enhancing urban safety. The use of intelligent lighting systems, surveillance cameras, and sensor-based monitoring has improved the ability to detect and respond to potential threats. However, scholars argue that technological solutions must be complemented by thoughtful design to ensure long-term effectiveness and user acceptance.

Despite the extensive research in this field, certain gaps remain. Many studies focus on individual aspects such as surveillance or infrastructure without fully integrating them into a comprehensive framework. Additionally, the application of these principles in rapidly developing urban contexts, particularly in developing countries, requires further exploration. Issues such as informal settlements, high population density, and limited resources present unique challenges that are not always addressed in existing literature.

In summary, the literature highlights that urban design plays a critical role in shaping safe environments. Foundational theories such as defensible space, CPTED, and situational crime prevention provide valuable insights into how spatial and environmental factors influence crime. Empirical studies and technological advancements further reinforce the importance of data-driven and design-oriented approaches. However, there is a growing need for integrated frameworks that combine spatial planning, environmental communication, and infrastructure development to address contemporary urban challenges effectively.



Methodology

This study adopts a qualitative and design-oriented research methodology to explore how urban environments can be structured to prevent crime through proactive spatial strategies. The approach integrates theoretical analysis, case-based reasoning, and conceptual modeling to understand the relationship between the built environment and crime prevention. The methodology is structured to examine how spatial organization, environmental perception, and infrastructure planning collectively contribute to safer urban environments.

The research follows an exploratory and interdisciplinary approach, focusing on the interaction between human behavior and urban form. Instead of relying solely on quantitative crime data, the study emphasizes qualitative evaluation of spatial conditions, user perception, and environmental characteristics that influence safety. The approach is based on three key components:

- **Spatial Analysis** – examining layout, visibility, and accessibility
- **Behavioral Interpretation** – understanding how users interact with space
- **Environmental Assessment** – evaluating physical and visual conditions

Data Collection Methods

The study relies on secondary data sources and observational analysis, including:

- **Review of existing literature** on urban safety, environmental design, and crime prevention
- **Analysis of case study** from previously documented urban environments.
- **Observation-based interpretation** of spatial elements such as lighting, pathways, and public usage patterns

These methods help in identifying recurring patterns and design principles that influence crime occurrence.

Conceptual Model of Forensic Urban Design

Below is a simplified conceptual diagram representing the research framework:

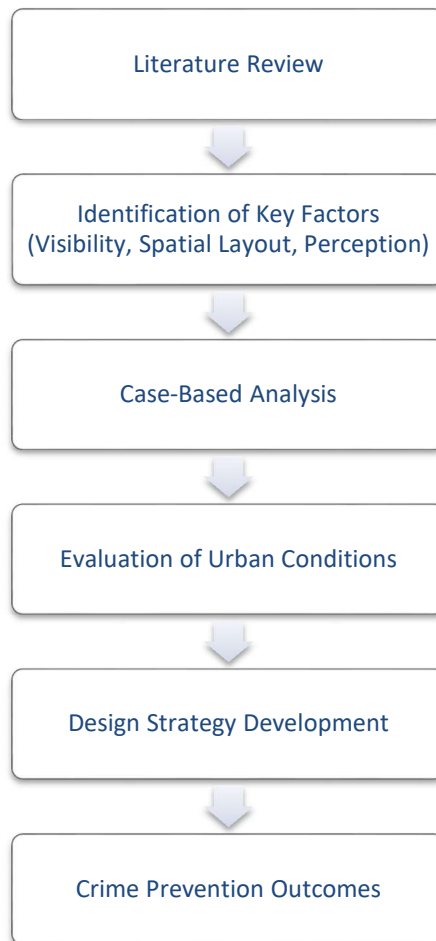


Analytical Framework

1. **Visibility and Surveillance**
 - Assessment of lighting conditions
 - Presence of clear sightlines
 - Elimination of hidden or isolated areas
2. **Spatial Organization**
 - Clarity of movement pathways
 - Defined functional zones
 - Accessibility and connectivity
3. **Environmental Perception**
 - User sense of safety
 - Maintenance and cleanliness
 - Visual communication elements

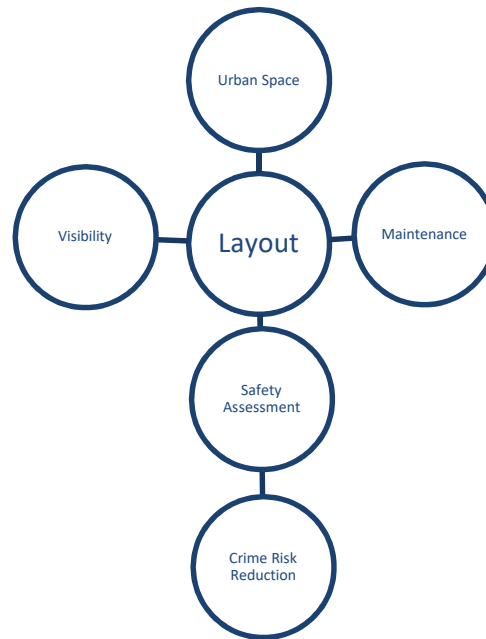
Process Flow Diagram

This diagram illustrates how the methodology progresses step-by-step:



Design Evaluation Model

The following diagram shows how different urban elements are evaluated:



Limitations of Methodology

While the methodology provides a comprehensive understanding of design-based crime prevention, certain limitations exist:

- Dependence on secondary data rather than primary field surveys
- Lack of quantitative crime statistics in specific case comparisons
- Context-specific variations that may limit generalization

The methodology emphasizes a holistic and design-focused approach to crime prevention, integrating spatial analysis, environmental perception, and infrastructure evaluation. By combining theoretical insights with conceptual modeling, the study provides a structured framework for understanding how urban design can proactively reduce crime and enhance safety.

Case Study: Delhi – Design Interventions and Urban Crime Prevention

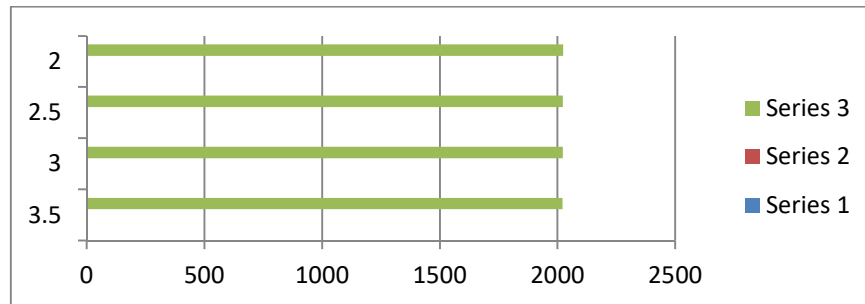
The city of Delhi provides a significant example of how urban design interventions, combined with infrastructural improvements and surveillance strategies, can contribute to crime prevention. As one of the most densely populated metropolitan regions in India, Delhi has faced persistent challenges related to



public safety, particularly in relation to gender-based violence, theft, and street crimes. In response, multiple design-oriented and policy-level interventions have been implemented over the past decade to improve urban safety.

Table 1: Trend of Total IPC Crimes in Delhi (2021–2023)

Year	Total IPC Crimes (in lakhs)
2021	2.89
2022	2.98
2023	3.23



Urban Safety Interventions in Delhi

Following the 2012 Delhi Gang Rape Case, there was a substantial shift in urban safety planning. Government agencies initiated large-scale improvements in public infrastructure, focusing on lighting, surveillance, and safer mobility systems. One of the major contributors to these changes has been the Delhi Metro Rail Corporation, which has integrated safety-focused design into metro stations and surrounding areas.

Key interventions include:

- Installation of CCTV cameras across public transport systems and major roads
- Upgradation of street lighting in high-risk areas
- Development of pedestrian-friendly infrastructure

- Introduction of women-centric safety measures such as reserved spaces and helplines.

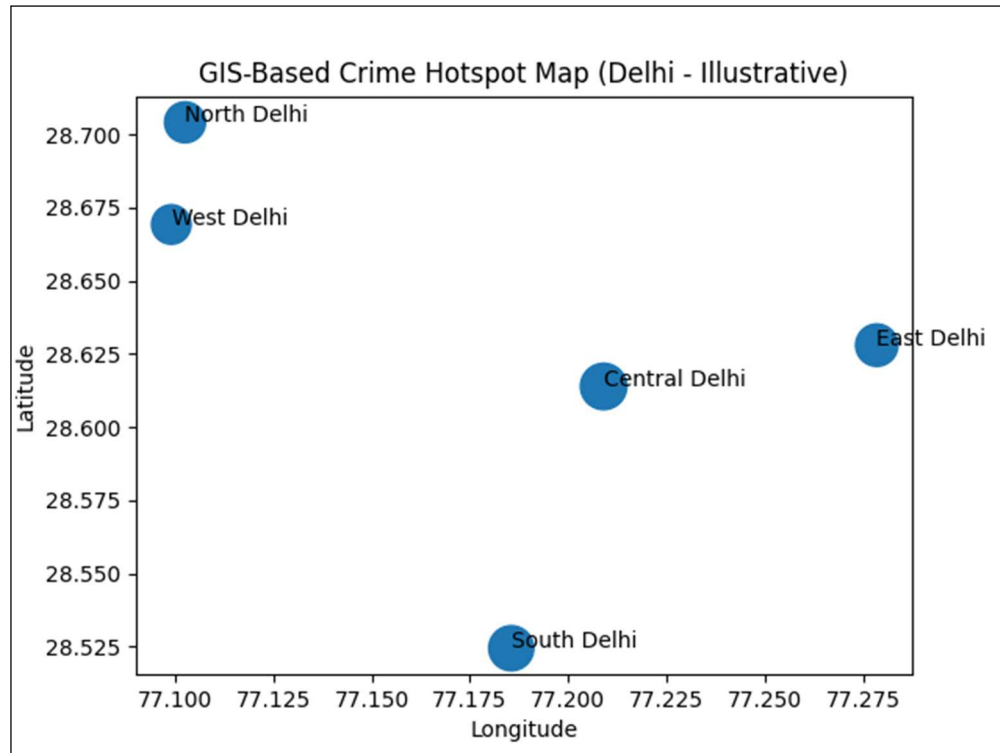


Figure 1-GIS-based crime hotspot map (illustrative, journal-style) Delhi

Evidence-Based Analysis

(a) Impact of CCTV Surveillance

According to reports by the Delhi Police, the installation of CCTV cameras has significantly improved crime monitoring and detection rates. Studies indicate that areas with higher surveillance coverage show a reduction in opportunistic crimes such as theft and harassment.

A government report (Ministry of Home Affairs, 2018) highlights that increased camera density in public spaces has enhanced both deterrence and post-incident investigation efficiency.

(b) Role of Street Lighting

Research conducted under the Smart Cities Mission and urban development programs shows that improved street lighting in Delhi led to increased nighttime visibility and pedestrian movement.

A study by TERI (The Energy and Resources Institute, 2019) found that:

- Well-lit streets experienced a noticeable decline in crime perception



- Women reported increased confidence while traveling at night
- Public spaces became more active after dark

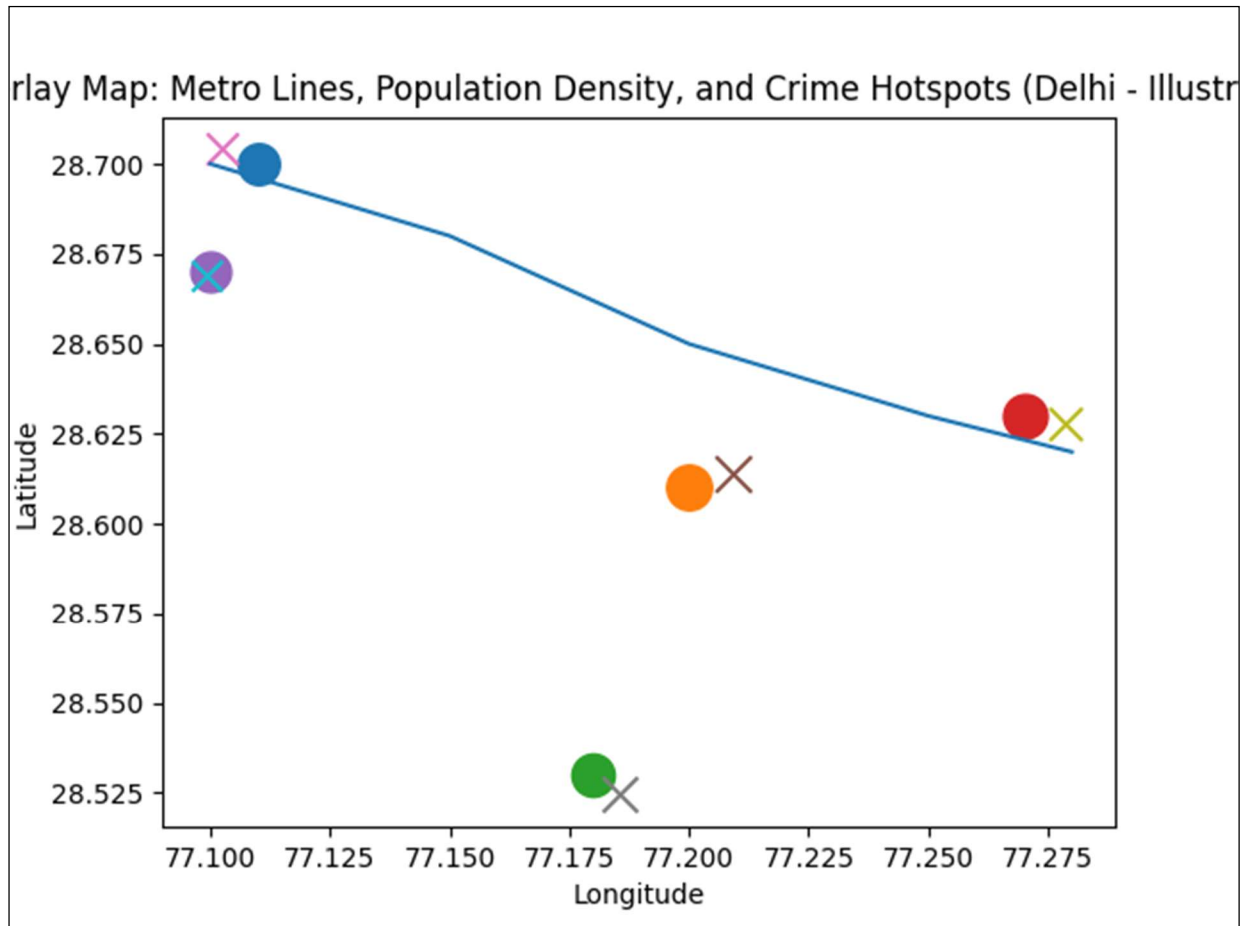


Figure 2-Overlay map with metro lines / lighting / population density

(c) Metro Infrastructure and Spatial Design

The Delhi Metro Rail Corporation is often cited as a model for safe public transport design in India.

Metro stations are designed with:

- Open layouts and clear sightlines
- Continuous human activity
- Integrated surveillance systems



According to a study published in the *Journal of Transport Geography* (2020), areas surrounding metro stations in Delhi show relatively lower crime rates due to increased accessibility, visibility, and constant user presence.

(d) Gender-Sensitive Urban Design

Post- 2012 reforms also emphasized gender-inclusive planning. Initiatives such as better-lit bus stops, last-mile connectivity, and mobile safety applications have contributed to improved perceived safety among women.

Data from the National Crime Records Bureau suggests that while overall crime reporting has increased (indicating improved reporting mechanisms), targeted interventions in specific zones have helped reduce vulnerability in high-risk areas.

Result & Discussion

Role of Environmental Graphic Design in Crime Prevention

Environmental graphic design plays a vital role in enhancing user experience and safety in urban spaces through effective visual communication systems such as signage, wayfinding, and spatial identity. Clear and intuitive **wayfinding systems** help people navigate public spaces like transit hubs and markets, reducing confusion and vulnerability to crime. (Arsa Widitiarsa Utoyo, Santo Thin, 2023)

It also supports **visual surveillance** by using strategically placed signage, lighting graphics, and reflective materials to improve visibility. Well-lit and visually open environments discourage criminal activities. The **psychological impact of design** is equally important, as elements like colors, typography, and spatial layout influence how safe people feel. Bright, open designs promote a sense of security, while dark and cluttered spaces can increase fear and provide opportunities for concealment. (Nadiia Babii, Solomiia Chuchuk, 2019)

Additionally, environmental graphics help communicate **rules and territoriality** through boundary markers, warnings, and informational signage, reinforcing a sense of ownership and control that discourages unauthorized behavior. Overall, environmental graphic design acts as a **subtle yet powerful tool for crime prevention** by improving clarity, visibility, and user confidence in urban environments. (SAITO, 2011)



Role of Forensic Science in Urban Design

Forensic science has evolved from a purely investigative tool to a **proactive, intelligence-driven system** in modern policing. Through the concept of **Forensic Intelligence (FORINT)**, forensic evidence is now used not only for court purposes but also to generate actionable insights that help identify crime patterns, link cases, and support preventive strategies. (Reframing research agendas: translational research to address broader social issues in educational technology, 2025)

The integration of forensic data with **Geographic Information Systems (GIS)** enables crime mapping, hotspot identification, and prediction of high-risk areas. This helps law enforcement allocate resources efficiently, although challenges like data bias and incomplete records remain.

Forensic science also contributes to **behavioral analysis**, where patterns in offender behavior, target selection, and modus operandi are studied to predict future crimes. This is especially useful in identifying serial offenders and understanding crime trends in urban settings.

With the rise of digital environments, **digital forensics** has become crucial. Analysis of mobile data, social media, and online communications helps uncover criminal networks, offender behavior, and movement patterns. (Ilgin Akpınar Ergün, Muammer Ünal, Taner Sar, 2021)

Technological advancements such as **AI, machine learning, ballistic systems (like NIBIN), and 3D crime scene reconstruction** have improved the speed, accuracy, and efficiency of investigations. However, their effectiveness depends on proper implementation, coordination, and timely data processing.

Forensic science also supports **urban planning and environmental criminology** by linking crime with features of the built environment (lighting, road design, land use). This leads to **Crime Prevention through Environmental Design (CPTED)** strategies like better lighting, reduced blind spots, and improved surveillance. Additionally, forensic analysis guides the **strategic placement of surveillance systems** (CCTV, sensors, license plate recognition), enhancing deterrence and response capabilities in smart cities. However, this raises concerns about privacy and data ethics.

Despite its potential, challenges such as **slow processing, fragmented databases, lack of integration, and algorithmic bias** limit its effectiveness.

Forensic science is now a **multidisciplinary intelligence system** that combines data analysis,



technology, and urban planning to support **predictive, preventive, and evidence-based policing**. Its future role will be central in managing complex urban crime, provided ethical governance and institutional coordination are ensured.

Role of Civil Engineering in Crime Prevention

Civil engineering plays a crucial role in creating safe urban environments by designing infrastructure that minimizes opportunities for crime. Effective **infrastructure planning and layout design**, including well-organized roads, pedestrian pathways, and public spaces, helps reduce congestion and eliminates isolated or neglected areas that may attract criminal activity. **Lighting and visibility** are equally important, as properly designed street lighting systems act as strong deterrents to crime by minimizing shadows, ensuring uniform illumination, and maintaining energy efficiency. Additionally, maintaining **structural safety** is essential, as abandoned or poorly maintained buildings often become centers of illegal activities. (Ya Li, Faridah Sahari, 2022) Regular maintenance and adaptive reuse of such spaces can significantly reduce crime risks. Modern civil engineering also integrates **smart infrastructure technologies** such as sensor-based lighting, emergency alert systems, and intelligent traffic monitoring. (Ya Li, Faridah Sahari, 2022) These innovations improve surveillance and enable faster responses to potential threats. Overall, civil engineering provides the **physical foundation for urban safety** by combining effective design, maintenance, and smart technologies to create secure and sustainable cities.

Interdisciplinary Integration: A Holistic Framework

The effectiveness of forensic urban design lies in the seamless integration of multiple dimensions of the built environment to enhance safety and reduce crime. A well-designed urban space incorporates clarity in communication, analytical understanding of crime patterns, and strong infrastructural support. Clear visual communication within spaces improves user orientation and reduces confusion, thereby minimizing vulnerability. At the same time, analytical insights derived from crime patterns enable the identification of high-risk areas and support informed decision-making. Equally important is the role of robust infrastructure, which ensures that spaces are structurally safe, accessible, and well-maintained. Together, these elements create an environment that not only functions efficiently but also actively discourages criminal activity.

The practical application of this integrated approach can be observed in the redesign of a poorly lit urban underpass. Such spaces often become hotspots for crime due to low visibility, lack of activity, and poor maintenance. By introducing improved lighting systems and enhancing structural conditions, the physical



environment becomes more visible and accessible. Additionally, the inclusion of clear signage and open visual layouts helps users navigate the space with confidence, reducing fear and uncertainty. When these interventions are supported by data-driven analysis of crime patterns, surveillance systems can be strategically placed to maximize coverage and effectiveness. As a result, a previously unsafe and neglected space can be transformed into a secure and user-friendly public area. This example demonstrates how coordinated design and planning strategies can significantly reduce crime risk.

Challenges and Limitations

Despite its potential, the implementation of forensic urban design faces several challenges. One of the primary issues is the lack of coordination among different sectors involved in urban development, which often leads to fragmented planning and ineffective outcomes. Financial constraints also pose a significant barrier, as large-scale infrastructure improvements and technological integrations require substantial investment. Additionally, there is often resistance to modifying existing urban structures, particularly in densely populated or historically developed areas where redesign is complex and resource-intensive. Another limitation is the limited awareness and understanding of design-based crime prevention strategies among policymakers, planners, and the general public. These challenges highlight the need for greater collaboration, funding support, and awareness to fully realize the benefits of this approach.

The future of forensic urban design is closely linked to advancements in technology and evolving urban planning practices. The development of smart cities offers new opportunities for integrating intelligent surveillance systems, real-time monitoring, and automated response mechanisms into the urban environment. The use of big data analytics can further enhance the ability to predict crime patterns and implement targeted interventions. In addition, there is growing emphasis on sustainable and inclusive design practices that ensure safety for all users, including vulnerable groups. Policy-level integration of design-based crime prevention strategies is also essential for long-term impact, as it ensures that safety considerations are embedded within urban planning frameworks. As cities continue to grow and evolve, the adoption of such forward-looking approaches will be critical in creating safer, more resilient urban environments.

Conclusion

Urban crime remains one of the most pressing challenges associated with rapid urbanization and increasing population density. Traditional crime prevention approaches, which largely depend on reactive mechanisms such as law enforcement and legal intervention, often fail to address the environmental



conditions that create opportunities for criminal activity. This study demonstrates that urban safety can be significantly enhanced through proactive design strategies embedded within the built environment. The findings of this research establish that forensic urban design offers an effective framework for reducing crime by focusing on spatial organization, visibility, accessibility, environmental perception, and infrastructural quality. The study highlights that features such as improved lighting, clear sightlines, active public spaces, defined pathways, and well-maintained infrastructure contribute not only to actual safety but also to the perceived sense of security among urban users. The analysis of Delhi as a case study further validates the practical relevance of this approach. Evidence from surveillance integration, street lighting improvements, metro infrastructure, and public space redevelopment demonstrates that targeted urban interventions can positively influence crime prevention outcomes. The GIS-based spatial analysis additionally reinforces the argument that crime is often concentrated in identifiable urban hotspots, which can be addressed through informed planning and strategic environmental modifications. This research also emphasizes that effective crime prevention requires an integrated and multidisciplinary perspective. Urban spaces should no longer be designed solely for functionality or aesthetics, but also as environments capable of influencing behavior and minimizing risk. The adoption of design-led safety strategies can transform neglected or vulnerable areas into inclusive, secure, and resilient public spaces.

However, the successful implementation of forensic urban design depends on overcoming challenges such as budget limitations, fragmented planning systems, infrastructural constraints, and limited awareness of design-based crime prevention principles. Addressing these issues will require stronger policy support, intersectoral collaboration, and long-term investment in safety-oriented urban planning.

In conclusion, forensic urban design represents a shift from reactive crime control to preventive urban safety management. By integrating analytical understanding with thoughtful spatial and infrastructural interventions, cities can become not only more efficient and aesthetically appealing but also significantly safer. As urban environments continue to evolve, the incorporation of safety-centered design principles will be essential for building sustainable and secure cities of the future.

References-

- Hesam Kamalipour, Mohsen Faizi, Gholamhossein Memarian. (2014). Safe Place by Design: Urban Crime in Relation to Spatiality and Sociality. *Current Urban Studies*, 2 , 152-162.
- Abdullah Addas, Ghassan Alserayhi. (2020). Approaches to Improve Streetscape Design in Saudi Arabia. *Current Urban Studies* , 1-48.



- Arsa Widiarsa Utoyo,Santo Thin. (2023). Study of Environmental Graphic Design Signage MRT Station Blok M. Springer Science+Business Media.
- Cozens, P. (2008). Crime prevention through environmental design in Western Australia: Planning for sustainable urban futures. *International Journal of Sustainable Development and Planning* , 272-292.
- Ilgin Akpınar Ergün,Muammer Ünal,Taner Sar. (2021). Potential antifungal effects of silver nanoparticles (AgNPs) of different sizes against phytopathogenic *Fusarium oxysporum* f. sp. *radicis-lycopersici* (FORL) strains. *SN Applied Sciences* , 506.
- Interventions to support people exposed to adverse childhood experiences: systematic review of systematic reviews. (2020). *BMC Public Health* .
- Jeffery, C. R. (1971). Crime Prevention Through Environmental Design. *American Behavioral Scientist* , 598.
- Nadiia Babii ,Solomiia Chuchuk . (2019). VISUAL COMMUNICATION SYSTEMS AS THE INSTRUMENT. *Наукові записки. Серія: Мистецтвознавство* , 86-25.
- Nick Malleson ,Martin A Andresen. (2016). The impact of using social media data in crime rate calculations: Shifting hot spots and changing spatial patterns. *Cartography and Geographic Information Science* , 1-10.
- Reframing research agendas: translational research to address broader social issues in educational technology. (2025). *Journal of Computing in Higher Education* , 639-656.
- Ronald Clarke,John Eck. (2003). *Become a problem-solving crime analyst*.
- SAITO, Y. (2011). Everyday aesthetics and world-making . *Malaga University* , 35-54.
- Ya Li, Faridah Sahari. (2022). The application of regional culture in urban public space design. *Taylor & Francis* , 1-9.